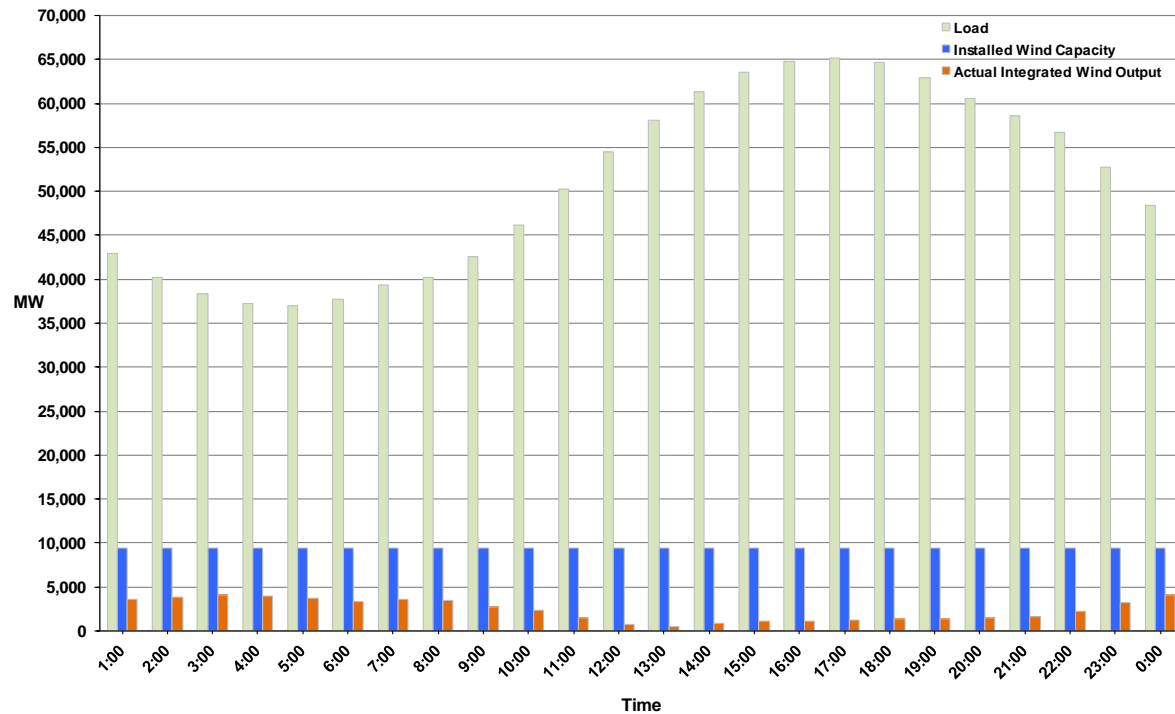




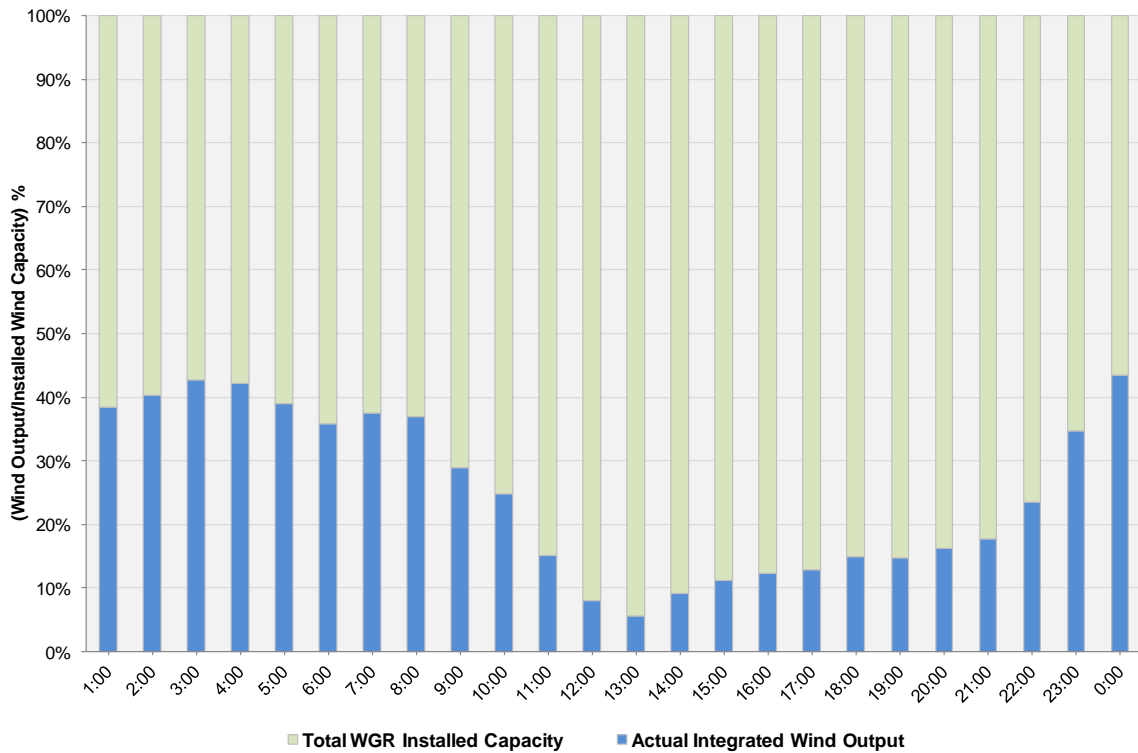
ERCOT Grid Operations Wind Integration Report: 07/25/11

| | |
|----------------------|------------------|
| Peak Load | 65,196 MW |
| Load Peak Hour | 17 |
| Wind Record 06/19/11 | 7,355 MW |
| Max Wind Value | 4,468 MW |
| Wind Peak Time | 23:59:56 |
| Wind Integration % | 9.66% |

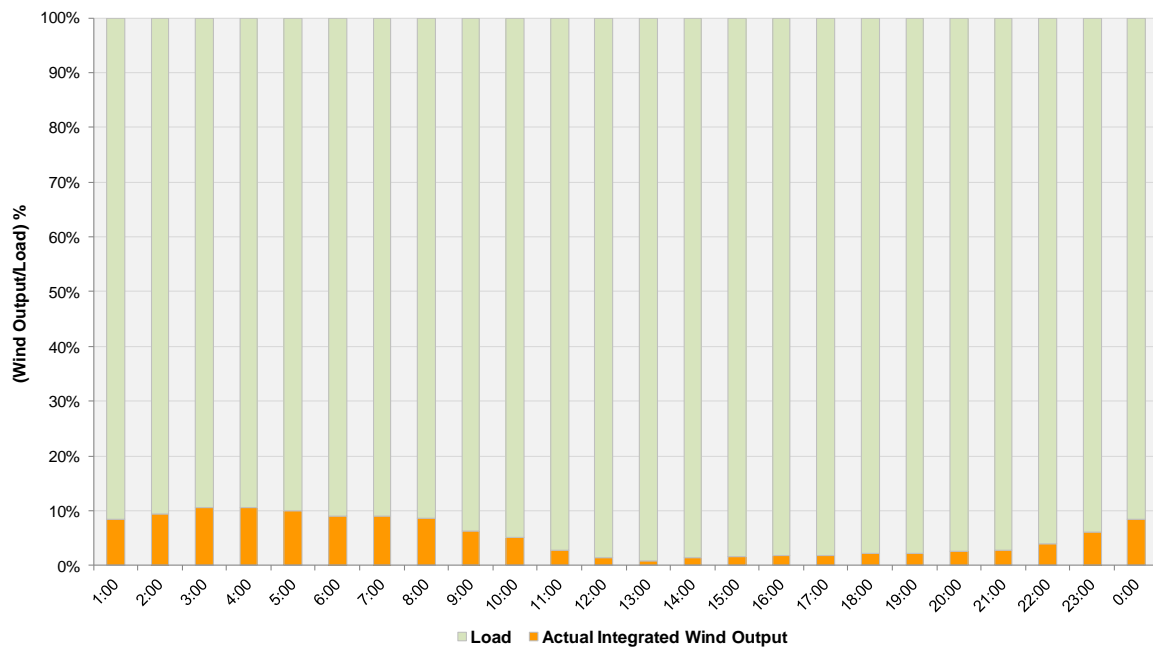
**Hourly Average Actual Load vs. Actual Wind Output
07-25-2011**



Actual Wind Output as a Percentage of the Total Installed Wind Capacity
07-25-2011



Actual Wind Output as a Percentage of the ERCOT Load
07-25-2011



ERCOT Load vs. Actual Wind Output 7/18/2011 - 7/25/2011

